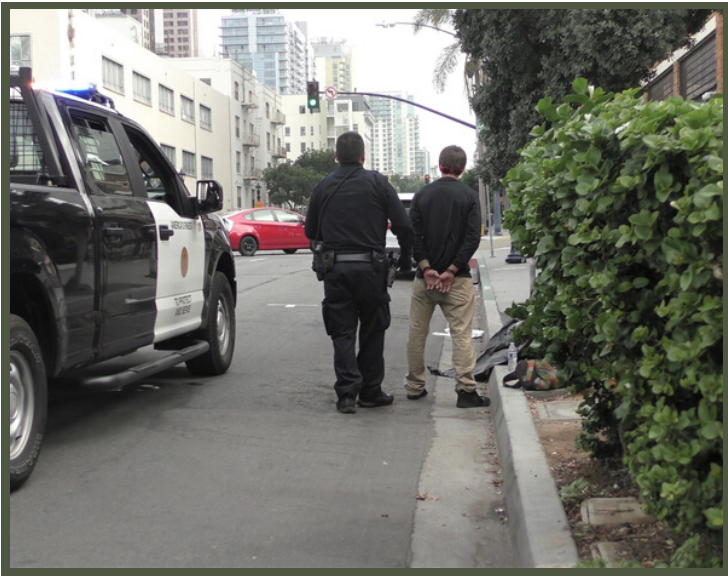


BEING HOMELESS IS NOT A CRIME

**GENERAL STUDIES 480: ENGAGED CITIZENSHIP AND SOCIAL RESPONSIBILITY  
(3 UNITS) PARTICIPATORY ACTION RESEARCH FOR SOCIAL JUSTICE:**

## **UNDERSTANDING THE CRIMINALIZATION OF HOMELESSNESS DURING COVID-19.**



While homelessness is caused by a lack of housing, a frequent consequence of homelessness is contact with police, which can have many negative consequences for people experiencing homelessness.

Our research will seek to answer the following questions:

- Why are the police often the first and most frequent point of contact for people experiencing homelessness?
- What effects do frequent police contact have on unsheltered people's sense of health and safety? How do police officers feel about this part of their jobs?
- What would alternative (non-police) responses to homelessness look like?

The course will offer an introduction to basic techniques in criminal justice research and data analysis. We will work alongside people who have had direct experience with this topic as we conduct our research (we will call these folks our "peer research" team). In this way, our approach will be informed by a Participatory Action Research framework – basically, that research on a social issue should involve leadership by and collaboration with people who have been directly affected by it.



Photos by Michael McConnell, San Diego Homelessness News

People experiencing homelessness have been hard-hit by the COVID-19 pandemic in many ways. Do you want to inform more effective solutions to helping people experiencing homelessness? Are you interested in community-engaged research? If so, then this section of GEN S 480 may be for you!